

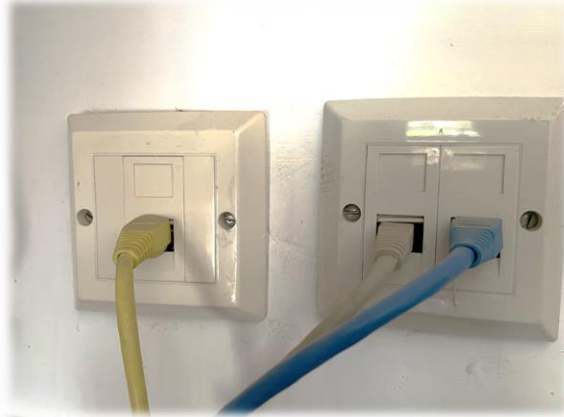
The background features a light blue gradient with several large, semi-transparent icons: a globe, a stylized globe with continents, a circular arrow, a magnifying glass, a pencil, and a circular arrow with a checkmark. A central black rounded rectangle contains the text. Light blue circuit-like lines with circular nodes extend from the left and right sides of the black box.

WI-FI (WIRELESS NETWORKS)

YOUR HOME NETWORK – ROUTER OR HUB



WIRED NETWORK

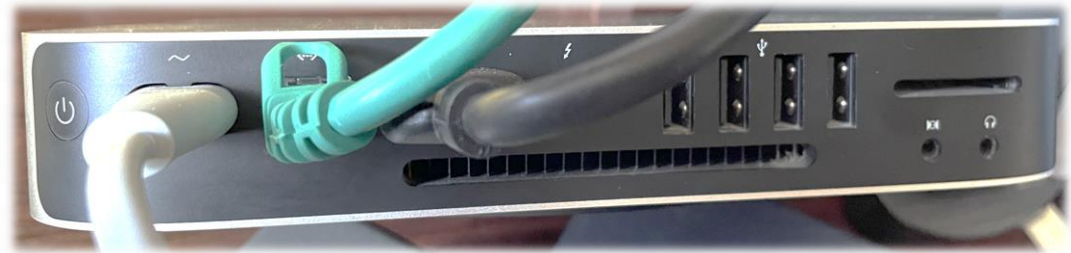


Pros:

- Very Reliable
- High Speed
- Just Works
- No SSID or Wi-fi Passwords

Cons:

- Wires
- Extra Equipment
- Complex ?



WI-FI - NETWORK



Pros:

- Easy to setup
- Support for Mobile Devices
- No extra cabling or equipment
- Flexibility
- Tidy



Cons:

- Patchy Connections
- Limited Range over cellular
- Signal Interference
- Slow compared to Wired

WI-FI - SIGNAL



Good-----Poor-----None

WI-FI : IMPROVING THE SIGNAL



Don't Cover the router

If Possible Pick a Central Location in your house

Don't put it on the floor, the higher the better

Avoid other electronics especially the Microwave

If the routers has multiple antennas point them in different directions

KNOW YOUR SPEED, CHECK YOUR SPEED

First check what speed you are supposed to be getting from your Internet Service Provider (BT Internet, SKY, Virgin Media, Talk Talk, etc

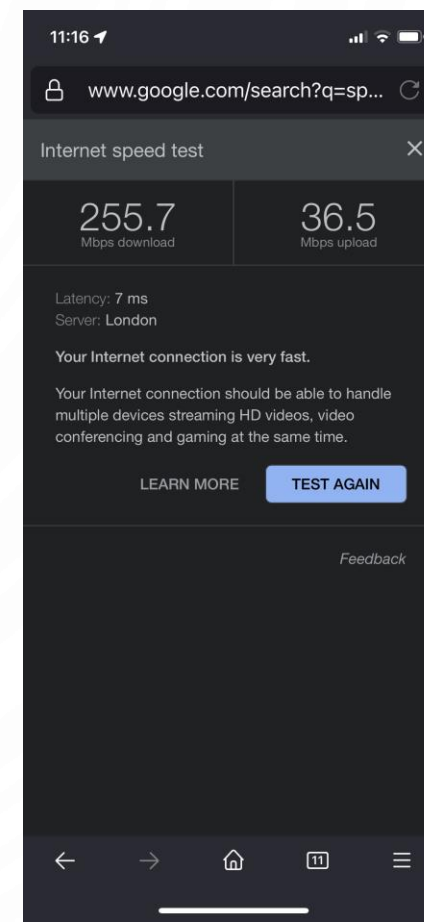
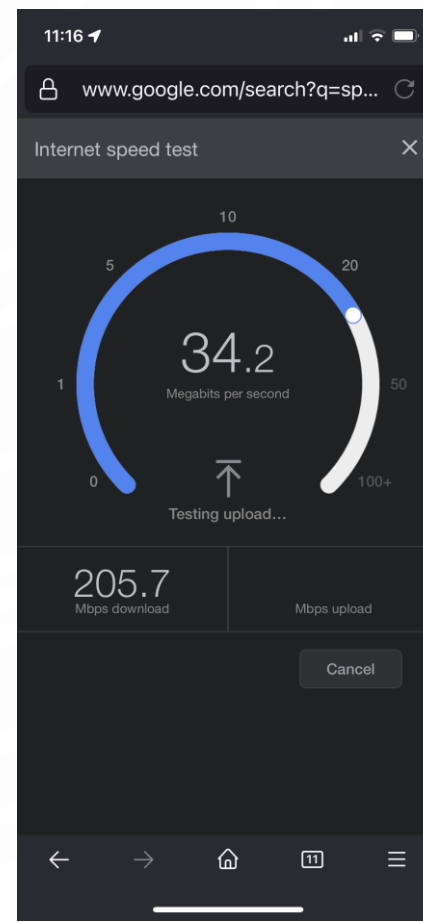
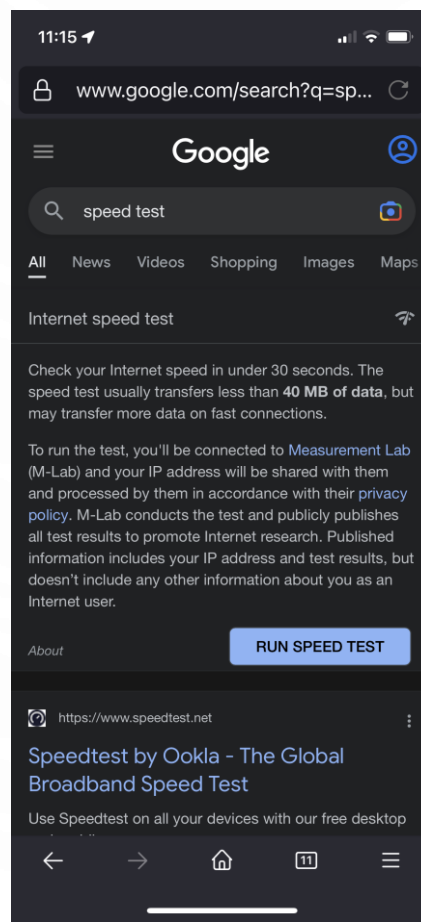
Open your web browser on your mobile phone and search for “Speed Test”

Click the Blue **RUN SPEED TEST** button

Move around your house and re-run the test to find any wi-fi dead spots

If you have a wired Computer run the test on that as well for comparison

Consider purchasing a wi-fi extender /booster, but speak to your ISP first



COMMUNITY CENTER WI-FI

CSPCC_Guest
284d8ebd7a

download 63.3Mb/s / 72.9 Mb/s
upload 17.8Mb/s / 18.75 Mb/s

WI-FI SPECIFICATIONS

IEEE Standard	802.11a	802.11b	802.11g	802.11n	802.11ac	802.11ax
Year Released	1999	1999	2003	2009	2014	2019
Frequency	5Ghz	2.4GHz	2.4GHz	2.4Ghz & 5GHz	2.4Ghz & 5GHz	2.4Ghz & 5GHz
Maximum Data Rate	54Mbps	11Mbps	54Mbps	600Mbps	1.3Gbps	10-12Gbps